

DOSSIER COMERCIAL

RESIDENCIAL  
**ANCOR II**

ABADES · ARICO · TENERIFE

**metrovacesa**



contents

# metrovacesa

Live as you dream

<b>Welcome</b> .....	4
<b>1</b> Living by the sea, feeling Tenerife .....	8
<b>2</b> Where the light, sea and your home meet.....	10
<b>3</b> Designed for you. Built around your life .....	14
<b>4</b> A home envisaged for you and your family .....	18

<b>5</b> Imagine a day spent at Residencial Ancor III .....	22
Drawings .....	24
<b>6</b> Technical Specifications .....	33
<b>7</b> Design your space. Choose your look.....	45
<b>8</b> We are committed to Sustainability .....	49



---

# metrovacesa

**Live** as you dream

*At Metrovacesa, we are committed to being your partner throughout the home buying process, providing transparency and continuous support.*

*Buying your future home is a complex process and we want to be by your side every step of the way, ensuring that your journey to ownership is as smooth and informed as possible. We believe in clear and open communication, offering you full transparency regarding the details of your home, price, timelines and the necessary legal formalities.*

*With our team of experienced professionals, you can rely on us to defend your best interests, answer your questions and address any concerns quickly and honestly. In addition, we are committed to providing you with personalised support, tailored to your needs and preferences. We will make sure that we understand you and listen to your wishes, so that you can make informed and wise decisions at all times.*

*Your satisfaction is our priority, and we will strive to exceed your expectations in every interaction. We are committed to guiding you, providing you with the necessary information, advising you in making decisions and solving any problems that may arise along the way to make your dream home a reality.*

**We build innovative and sustainable housing;  
unique and cozy homes to live in.**

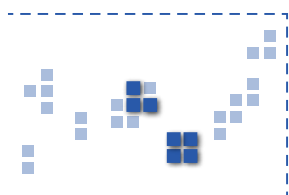
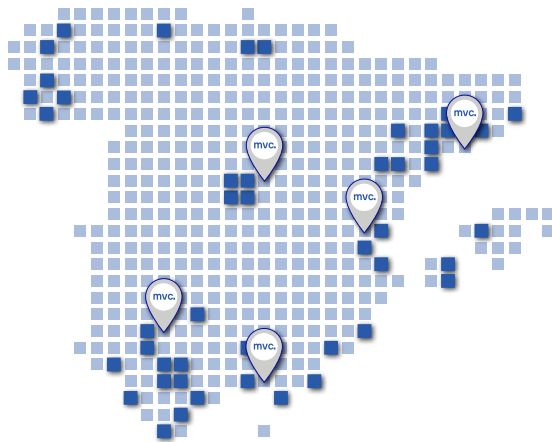
---



# More than 100 years building homes for you.

## metrovacesa

Although we look back on our past successes with pride, our sights are always set on creating the homes of the future: strategic locations, sustainable and environmentally friendly housing, homes created for your enjoyment with only the highest quality materials... With the guarantee of a great century-old company with national presence.



Delegations  
mvc.

1918

Compañía Inmobiliaria Metropolitana (CIM) and Compañía Urbanizadora Metropolitana (CUM) founded in Madrid.

Company listed on the Madrid Stock Exchange

1941

1946

Creation of the **Vacesa** real estate agency, focused on rentals.

Development of the **Edificio España** (25 floors, 117m de high).

1953



1957

Development of **Torre Madrid** (38 floors, 165m high).



Merger of CIM, CUM and Vacesa to create **Metrovacesa, S.A.**

1989



2005

Beginning of international expansion. Annual deliveries of some 2,200-2,600 from 2005 to 2008 in a highly competitive environment.

Due to the financial crisis, banks become the main shareholders of **Metrovacesa, S.A.**

2009



2013

Company taken private.

Spin-off of the portfolio of assets transferred to **MERLIN Properties** of €1,097 million (1) provided by Santander, BBVA and Popular in carefully chosen locations.

2016  
2017

2018



MCV is listed again.  
**GAV of €2,606.**

**522 M€** paid out to shareholders in dividends between 2019- 2023.

2023

2024

**8,400 homes delivered** and **14,000 launched** between 2018-2024

**+10,000 homes delivered** and more than **+15,000 homes launched** during the 2018-2025 period.

2025



# 1 Living by the sea, feeling Tenerife.

Nestled on the south-east coast of Tenerife, in the charming village of Abades, Arico, Residencial Ancor II invites you to enjoy a privileged natural environment, where tranquillity, the ocean and the Canarian lifestyle come together.

Surrounded by magnificent golden sandy beaches and protected by the Punta de Abona, this residential area offers a mild climate all year round and an ideal environment to rest, live or invest.

With excellent communications, you will always be connected: only 20 minutes from Tenerife South Airport, 35 minutes from Santa Cruz, and less than half an hour from the main tourist centres such as Los Cristianos and Playa de las Americas.

Residencial Ancor II, where the sea, tranquility and your home meet.





# 2

## Where the light, sea and your home meet.

Residencial Ancor II is much more than a residential development: it is a lifestyle inspired by the tranquillity, light and unspoilt nature of the south-east coast of Tenerife.

Located in Abades, Arico, within a private urbanisation, the complex comprises 9 exterior blocks of apartments, all facing south-east, which guarantees magnificent natural light and, for the most part, views of green landscaped areas. Every corner has been designed to offer an experience of well-being, tranquillity and comfort.



Here, every detail has been designed to blend in with the surroundings and make the most of the natural beauty of the Tenerife coastline. Whether enjoying a sunset walk, relaxing in the communal areas or simply contemplating the horizon from your terrace, at Residencial Ancor II every moment becomes an invitation to reconnect with yourself, with nature and with a more authentic way of life.



# A residential complex that exudes ocean, light and well-being.

A complex of 1, 2 and 3 bedroom dwellings, designed for those who dream of a serene, active life connected to nature. Swimming pool, gymnasium, community room and garden areas create a perfect environment to share, take care of yourself and enjoy yourself without rushing.

Every detail has been carefully selected to offer quality, comfort and durability. Resistant flooring, modern finishes and private terraces that will encourage you to disconnect, with architecture designed to make the most of natural light and the Atlantic sea breeze.

Residencial Ancor II is not just a place to live. It is that corner of the world where everything fits together: well-being, landscape, and style.







# 3

Designed for you.  
Built around  
your life.

At Residencial Ancor II, every design decision has been made with a clear purpose in mind: to improve your day-to-day life. The team at Makin Y Molowny Architects has created a residential complex with innovative, functional architecture in harmony with the climate and landscape of Arico.



From the first sketches to the last details, everything has been designed to provide you with comfort, well-being and quality of life. Spaces that adapt to your pace of life, to your family and to the way you really live.

Welcome to your new home. Welcome to Residencial Ancor II.







# 4

## A home envisaged for you and your family.

At Residencial Ancor II you will find an exceptional home.

From the meticulous layout of the homes to the carefully designed finishes and the selection of top-quality materials, every detail is imbued with our commitment to excellence.

Homes where natural light bathes every room, where by opening a window you can feel the breeze from the terraces overlooking the sea. Where you will enjoy great moments of seclusion or enjoyment with friends and family.



# Designed for living, designed for enjoyment.

At Residencial Ancor II, each property has been designed to make you feel at home from the very first day.

You can choose between 1, 2 or 3 bedrooms, with spacious, light and customisable spaces to suit your style. Because your home should be as unique as you are.

Our dwellings include a garage and storage room, and the option of living on the ground floor with a large outdoor space or on the upper floor with a large terrace to enjoy the sea views.

Imagine your mornings with a sea breeze, and your sunsets among infinite blues.

Residencial Ancor II is that place you dreamed of... which can now be yours.





# 5

## Imagine a day spent at Residencial Ancor II.

The weather is good and the communal areas of Residencial Ancor II are bustling with life. The little ones run around the communal areas, while the adults relax on the lawns by the pool with a breathtaking sea views as a backdrop.

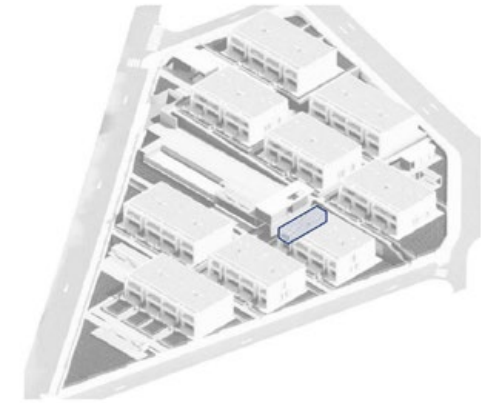
In the communal gym space, some start their day with energy and well-being. The garden areas encourage you to disconnect, take a deep breath and reconnect with the calmness of the surroundings.

Here, every day is an invitation to live life to its fullest.

Welcome to Residencial Ancor II, where everything has a perfect place.



LOCALIZACIÓN



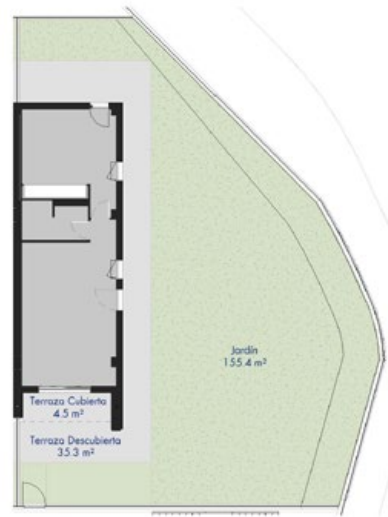
CUADRO DE SUPERFICIES

S. Útil Interior Vivienda	38.3 m <sup>2</sup>
S. Construida Int. Vivienda + p.p. ZZCC	52.5 m <sup>2</sup>
S. Útil Exterior Vivienda	6.7 m <sup>2</sup>
S. Cons. Int. Viv. + p.p. ZZCC + S. Útil Ext. Viv.	59.2 m <sup>2</sup>

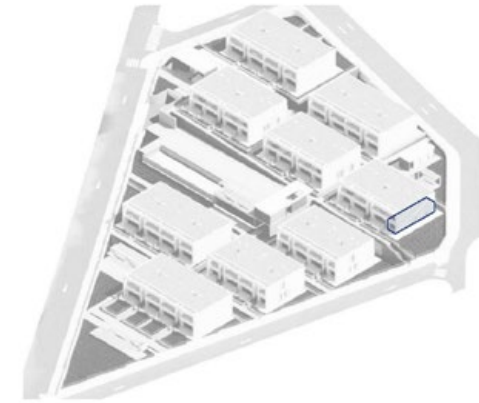


This floor plan is not final, as it has been prepared based on the Building's Basic Design Project. Therefore, Metrovacesa reserves the right to introduce any modifications required for technical and/or legal reasons, or those imposed by any public authority or administrative body, always adapting them to the Final Execution Project. Any accessory elements shown (for example, kitchen furniture or landscaping features) are for illustrative purposes only. Door swings and the layout of sanitary fittings are non-binding. The stated surface areas are approximate and may be subject to change for technical and/or legal reasons during the construction process.





LOCALIZACIÓN



CUADRO DE SUPERFICIES

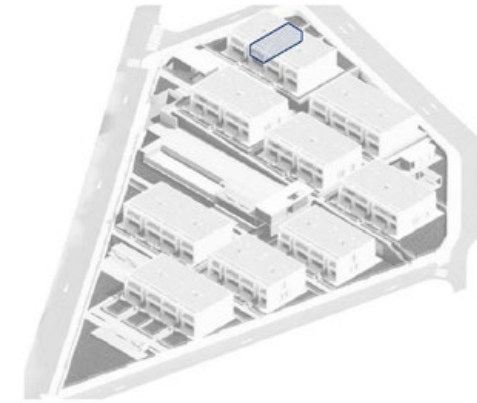
S. Útil Interior Vivienda	44.9 m <sup>2</sup>
S. Construida Int. Vivienda + p.p. ZZCC	60.7 m <sup>2</sup>
S. Útil Exterior Vivienda	195.2 m <sup>2</sup>
S. Cons. Int. Viv. + p.p. ZZCC + S. Útil Ext. Viv.	255.9 m <sup>2</sup>



This floor plan is not final, as it has been prepared based on the Building's Basic Design Project. Therefore, Metrovacesa reserves the right to introduce any modifications required for technical and/or legal reasons, or those imposed by any public authority or administrative body, always adapting them to the Final Execution Project. Any accessory elements shown (for example, kitchen furniture or landscaping features) are for illustrative purposes only. Door swings and the layout of sanitary fittings are non-binding. The stated surface areas are approximate and may be subject to change for technical and/or legal reasons during the construction process.



LOCALIZACIÓN



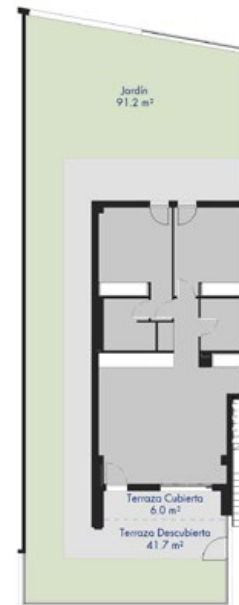
CUADRO DE SUPERFICIES

S. Útil Interior Vivienda	57.9 m <sup>2</sup>
S. Construida Int. Vivienda + p.p. ZZCC	76.0 m <sup>2</sup>
S. Útil Exterior Vivienda	11.2 m <sup>2</sup>
S. Cons. Int. Viv. + p.p. ZZCC + S. Útil Ext. Viv.	87.2 m <sup>2</sup>

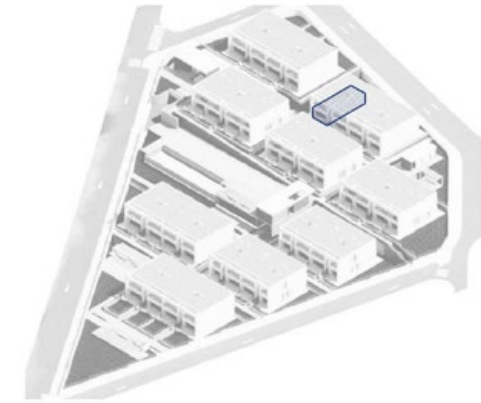


This floor plan is not final, as it has been prepared based on the Building's Basic Design Project. Therefore, Metrovacesa reserves the right to introduce any modifications required for technical and/or legal reasons, or those imposed by any public authority or administrative body, always adapting them to the Final Execution Project. Any accessory elements shown (for example, kitchen furniture or landscaping features) are for illustrative purposes only. Door swings and the layout of sanitary fittings are non-binding. The stated surface areas are approximate and may be subject to change for technical and/or legal reasons during the construction process.





LOCALIZACIÓN



CUADRO DE SUPERFICIES

S. Útil Interior Vivienda	64.9 m <sup>2</sup>
S. Construida Int. Vivienda + p.p. ZZCC	86.6 m <sup>2</sup>
S. Útil Exterior Vivienda	138.8 m <sup>2</sup>
S. Cons. Int. Viv. + p.p. ZZCC + S. Útil Ext. Viv.	225.4 m <sup>2</sup>

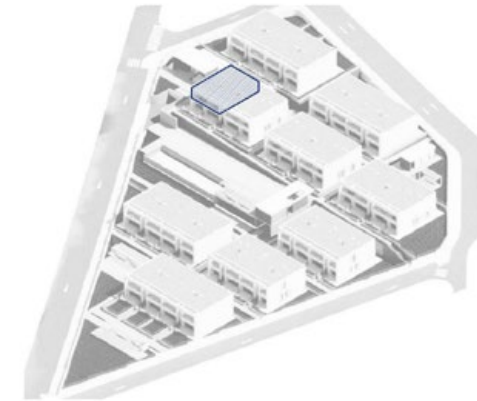


This floor plan is not final, as it has been prepared based on the Building's Basic Design Project. Therefore, Metrovacesa reserves the right to introduce any modifications required for technical and/or legal reasons, or those imposed by any public authority or administrative body, always adapting them to the Final Execution Project. Any accessory elements shown (for example, kitchen furniture or landscaping features) are for illustrative purposes only. Door swings and the layout of sanitary fittings are non-binding. The stated surface areas are approximate and may be subject to change for technical and/or legal reasons during the construction process.





LOCALIZACIÓN



CUADRO DE SUPERFICIES

S. Útil Interior Vivienda	96.3 m <sup>2</sup>
S. Construida Int. Vivienda + p.p. ZZCC	125.5 m <sup>2</sup>
S. Útil Exterior Vivienda	24.8 m <sup>2</sup>
S. Cons. Int. Viv. + p.p. ZZCC + S. Útil Ext. Viv.	150.3 m <sup>2</sup>



This floor plan is not final, as it has been prepared based on the Building's Basic Design Project. Therefore, Metrovacesa reserves the right to introduce any modifications required for technical and/or legal reasons, or those imposed by any public authority or administrative body, always adapting them to the Final Execution Project. Any accessory elements shown (for example, kitchen furniture or landscaping features) are for illustrative purposes only. Door swings and the layout of sanitary fittings are non-binding. The stated surface areas are approximate and may be subject to change for technical and/or legal reasons during the construction process.









# 6

## Technical Specifications.

These technical specifications are for guidance only, Metrovacesa, S.A. reserves the right to make any modifications on the grounds of technical or legal reasons, that are indicated by the project architect as being necessary or convenient for the correct completion of the building or that are ordered by the competent public bodies, in which case they will be replaced by others of equal or superior quality. The images in this brochure are for guidance only and are not contractually binding.

# Modern design and attractive volumes.



## Foundations and Structure

Both the **Foundations** and the **Structure** will be made of reinforced concrete. Subject to compliance with the Technical Building Code and ten-year guarantee.



## Façade

The façade is rendered and painted with acrylic paint for outdoor use.

In order to provide homes with a high level of **comfort and energy savings**, the façade cladding will be made of hollow vibrated concrete block, **thermal and acoustic insulation** and laminated plasterboard cladding.



## Roofs

Non-transitable inverted flat roof, consisting of a slope formation with lightened concrete, with **waterproofing, thermal insulation** and gravel protection.



## Exterior carpentry

Anodised **aluminium carpentry** with profiles complying with the specifications for **thermal and acoustic insulation** as required by regulations. They will be glazed with **double-glazing with an intermediate air chamber** and shall also comply with the **thermal and acoustic insulation** required by current regulations.

The bedrooms will have a light reduction system, **aluminium blinds** in the colour of the exterior carpentry.





# Maximum thermal and acoustic comfort.



## Interior carpentry

Security entrance door to the dwellings with **3-point lock**. Interior doors will be made of smooth waterproof MDF, with stainless steel hardware in bathrooms and bedrooms.

The bedrooms are equipped with **compact or monoblock wardrobes**, with hinged doors in white, with interior linen finish, fitted with storage shelf and hanging rail.



## Partitions and insulation

The partition walls between dwellings are made of a core of vibrated concrete block, **rock wool thermal-acoustic insulation** and laminated plasterboard lining on both sides.

The interior distribution partition walls of each dwelling will be made up of laminated plasterboards mounted on a galvanised steel structure and **mineral wool thermal-acoustic insulation**.

All the enclosures and partition walls of the communal areas are made of vibrated hollow concrete block, coated with plaster or rendered with cement mortar and acrylic paint for exteriors or interiors, depending on the area.







## Floor and wall tiling

General flooring throughout the dwelling in vinyl laminate, with skirting boards matching the interior carpentry of the property.

All homes have a terrace with a non-slip stoneware finish.



## Bathrooms

For the **vertical surfaces in bathrooms** the choice is to combine stone-ware wall tiles with interior smooth plastic paint in a light colour, depending on the layout of the furniture and sanitary ware.



### Master bathroom includes:

- ROCA toilet, The Gap Square model.
- ROCA washbasin, The Gap model, with vanity unit and mirror.
- ROCA L20 washbasin tap.
- ROCA Terran shower tray.
- ROCA L 20 shower tap with Stella bar.

### Secondary bathroom includes:

- ROCA toilet, The Gap Square model.
- ROCA washbasin, The Gap model.
- ROCA L20 washbasin tap.
- ROCA Terran shower tray.
- ROCA L 20 shower tap with Stella bar.



# Experience comfort in style.



## Kitchen

The walls will be finished with smooth light-coloured plastic paint. They will be delivered furnished, with a design of wall and base units.

The worktop and its front panel of the working area shall be Compac, Silestone or similar.

They will be delivered with sink, taps, vitroceramic hob, electric oven and fan extractor hood under wall cabinet.



## Suspended ceilings and paint

In the area housing the **suspended ceilings** these will be in laminate plasterboard with a smooth interior plastic paint finish. Remaining ceiling within the dwelling will be garnished and coated plaster.

The walls will be finished with smooth light-coloured **plastic paint**.



## Ventilation and extraction system

The surface and layout of the openings in the dwelling are designed with the aim of taking maximum care of the interior ambience of the home.

In addition to natural ventilation, the dwelling shall have, as required by regulations, mechanical ventilation by means of individual units with self-regulating suction outlets located in the damp rooms within the dwelling.





## Electricity, TV and telephone installations

The electrical installation of each dwelling consists of a general protection panel and a network embedded under tube, dimensioned for a degree of electrification as needed.

The mechanisms are of the highest quality.

Each dwelling has its own **video intercom system**.

The building has the infrastructure **required by current telecommunications regulations, R.I.T.I. and R.I.T.S.** equipment included.

With new technologies in mind, a sufficient number of power sockets have been provided for the connection of computers, music and TV equipment. The complex will also have a community antenna and channelling for digital TV.



## Air-conditioning and hot water

The property will come with the **pre-installation for air-conditioning** provided via splits in the living room and bedrooms.

Domestic hot water by means of **aerothermal energy with the support of photovoltaic panels** in pursuit of maximum energy efficiency. The building is fitted with water tanks with sufficient capacity to ensure an uninterrupted supply of running water to the building, as well as a pressure group to guarantee the supply to each dwelling.



## Bathroom fittings and plumbing

In bathrooms, resin shower tray, remaining sanitary ware made of **vitri-fied porcelain**.

The rest of the sanitary fittings shall be fitted with mixer taps.



# A Residential complex with spaces suited to the entire family.



## Access and communal areas

The communal areas of the development consist of: basement with garage and storage rooms, building providing access from the outside of the plot.

The complex will be equipped with a **gymnasium and a communal room.**

The main entrance will have a mailbox area. The interior lighting in all these areas will be controlled by motion sensors. The lift will have automatic stainless steel doors.

Stairwells and communal areas above ground level will be, depending on the area, made of concrete or paved with stoneware and skirting of the same material to facilitate cleaning.

The **communal open-air spaces** have been carefully designed, where the vegetation, the **pool and the swimming pool** and service facilities become one of the main attractions within this project.



## Garage and storage room

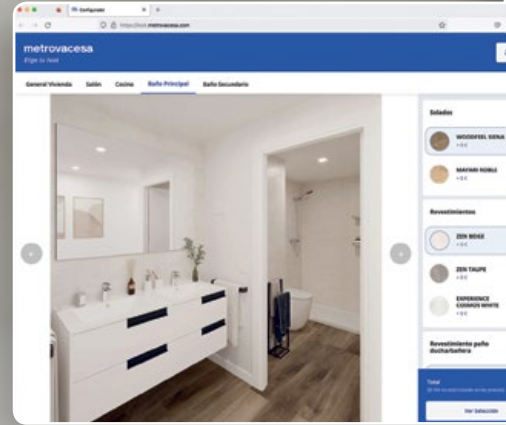
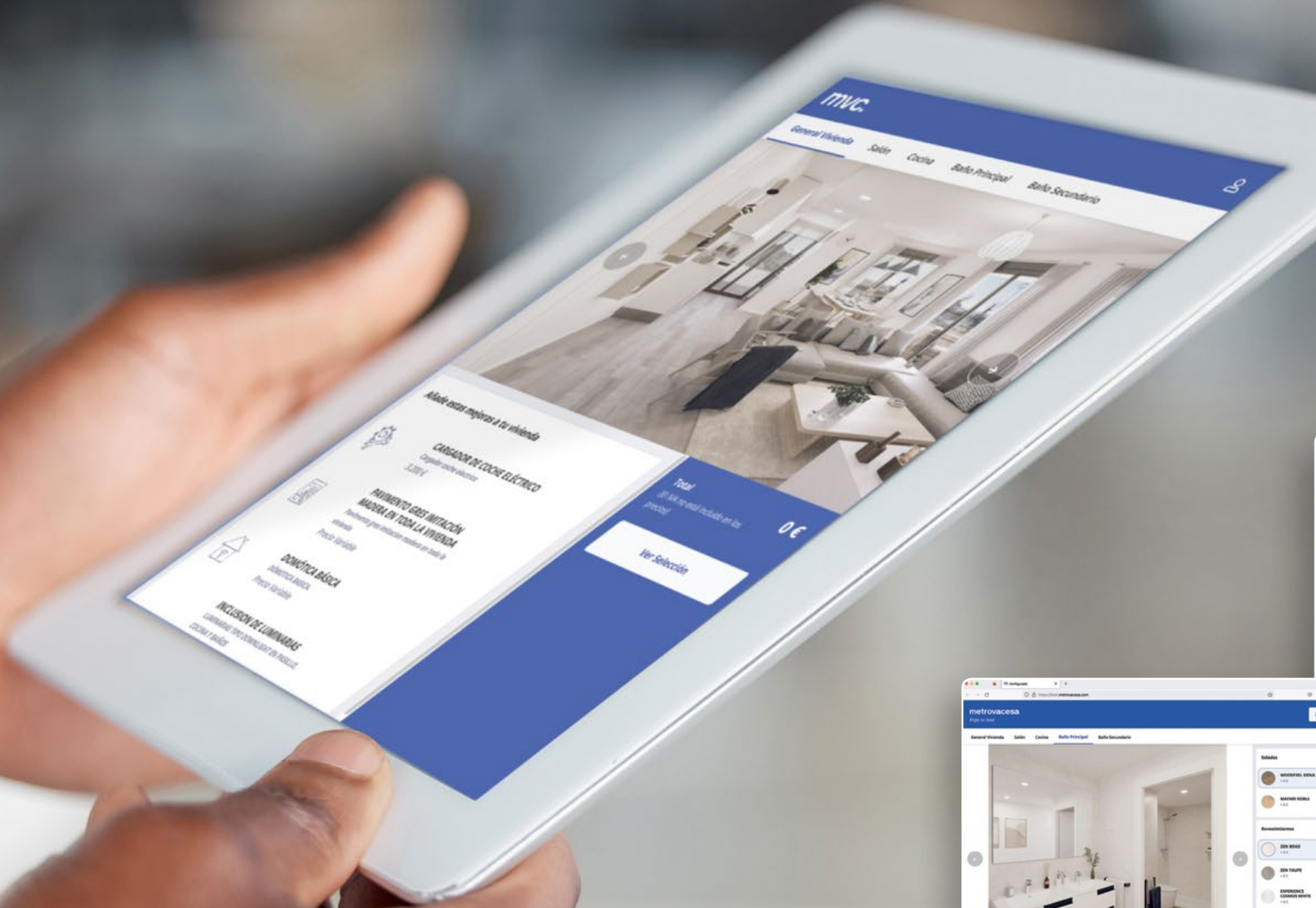
The building has a garage entrance with a remote-controlled motorised door with anti-crushing security device.

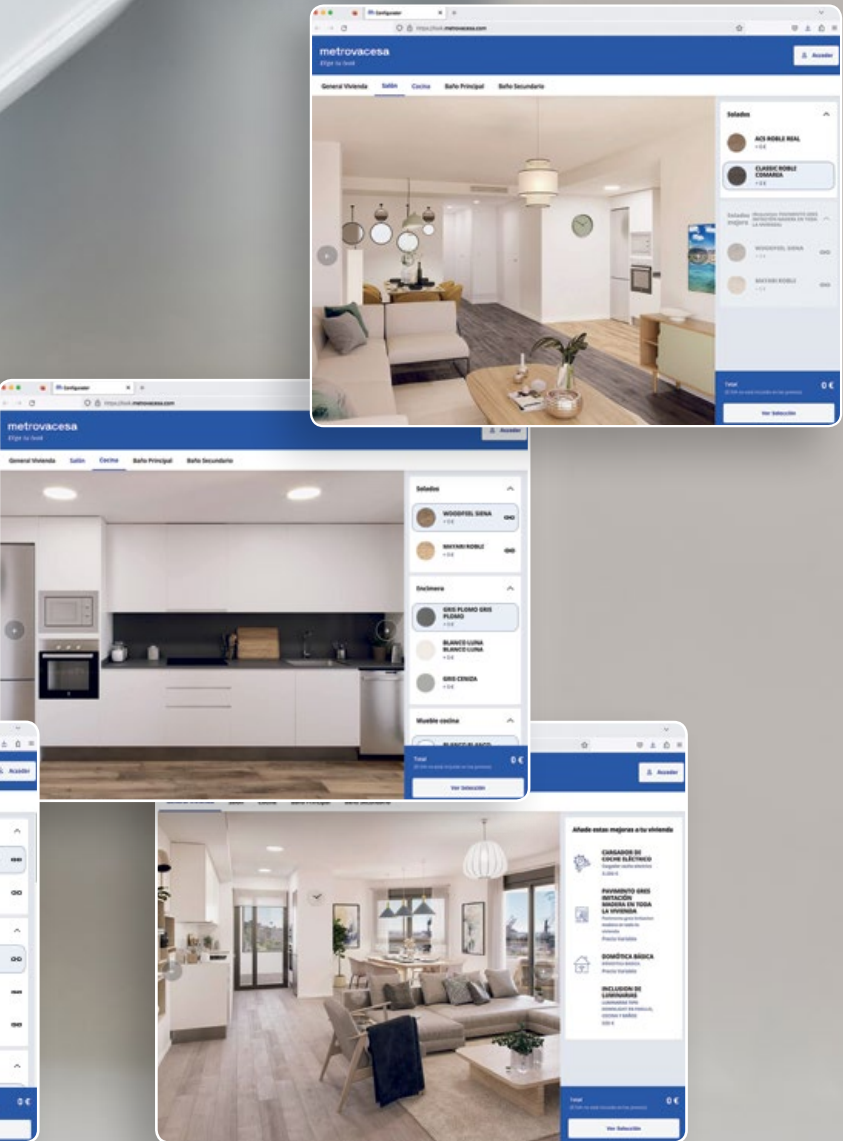
The storage room area is on the same floor as the garage.

Both areas have automatic fire detection security systems in the communal areas, central alarm system and fixed and mobile fire extinguishing elements, according to regulations.

The paving is of polished reinforced concrete screed. The storerooms are finished in interior plastic paint, tiled floors with matching skirting board and galvanised sheet metal doors.







## Design your space. Choose your look.

Customise every detail and design your home with Choose Your Look. With a wide selection of materials and customisation options, we encourage you to design a space that reflects your personality and lifestyle.

From the floors to the finishes, every choice is yours. Unleash your creativity and make every corner a reflection of yourself.





## A home where every detail reflects your essence.

Let's build your home together. At Metrovacesa we help you choose the extras that will wrap you in comfort and the conviction that you are living in the house you always wanted to be in.

You can choose from free finishes such as the choice of bathroom materials, the colour of the flooring or the colour scheme of your kitchen.

Among the finishes at a cost are some as functional as the electric vehicle recharging point, the motorisation of the blinds or the installation of the bathroom partitions.

Your home is yours, customise it!





## We are committed to sustainability.

All our developments start off from a design that prioritises comfort, innovation and the quality of our constructions. As a result, our buildings incorporate efficient technologies.

We design buildings to respect sustainability and improve the environmental surroundings of our developments and the city:

- Design incorporating passive measures.
- Implementation of renewable energies.
- Efficient air conditioning systems.
- Incorporation of materials and systems that favour sustainability.

[More information on our website.](#)

# Innovative and sustainable housing.

In a world where every decision matters, choosing sustainable housing is not only a smart choice, but also a commitment to the future.

At Metrovacesa, we not only build houses, but we also create spaces that respect and protect our environment, offering you a conscious lifestyle full of benefits.





Imagine waking up every morning in a home that not only welcomes you but also contributes to a more sustainable world. From energy efficiency to responsible use of resources, every aspect of our homes has been designed with you and the environment in mind.

By choosing a sustainable home, you will benefit from lower energy consumption, which translates into lower bills and reduced environmental impact. In addition, you will enjoy a healthier and more comfortable indoor environment, thanks to the air quality and natural light provided by our way of conceiving and building developments.

**Join us on the path to a sustainable lifestyle.**



## Committed to sustainability and savings.

At Metrovacesa we work each day to ensure that our projects are not only modern and functional, but also respectful of the environment and efficient in the use of resources.

We distinguish ourselves by applying robust and demanding sustainability criteria to each project, reflecting our true commitment to the environment and the well-being of people.

For this reason, we are proud that Residencial Ancor II has an A-A energy rating, a recognition that demonstrates our continuous effort to build more responsible, efficient homes designed to help you reduce energy consumption and save in your daily life.





## Circular Economy

Addressing the management of a development's resources and materials throughout its life cycle is our priority.

This icon is a reflection of that implication.



## Water resources

This icon guarantees that Metrovac-esa is working to reduce the impact of the water footprint of this development.



## Biodiversity

MVC's commitment is to protect, preserve and restore the environment in which we build our developments.

This icon reflects this commitment to your future home.





## Decarbonisation

Our commitment is to perform a Life Cycle Assessment (LCA) of all our developments with the aim of reducing CO<sub>2</sub> emissions into the atmosphere. This icon showcases that actions related to decarbonisation have been studied in your future home.



## Energy efficiency

In most of our developments, we achieve the highest energy efficiency ratings and apply various strategies to improve the comfort of your future home.





## Sello Domum Sostenible

It was born from the idea that the conception and design of our homes should be grounded in sustainability as a fundamental principle for their development. Aspects such as energy efficiency, the circular economy, and a design aligned and adapted to the climatic and landscape characteristics of the location where they are built are the key elements of the Sello Domum Sostenible.

The final structure of the Sello Domum Sostenible is based on six categories that determine Metrovacesa's level of commitment in each development.



The LCA is a tool that helps us to study the components of a building, during its useful life, from its extraction, construction, use, including demolition or disposal of the waste generated from such demolition.

This tool allows us to quantify emissions throughout the process and implement measures to reduce them.



# metrovacesa

Turn your new house into the home you've  
always dreamed of.

At Metrovacesa we build homes so that you can build your  
dreams in them.

Your well-being and that of your family is what drives us to  
keep improving every day.



# metrovacesa

Vive como sueñas.

Da vida a tu sueño en [metrovacesa.com](https://www.metrovacesa.com) | 900 55 25 25 | [infopromociones@metrovacesa.com](mailto:infopromociones@metrovacesa.com)

Folleto informativo sin carácter contractual elaborado a partir del Proyecto Básico presentado para tramitación de la licencia de obras. Información sujeta a modificaciones necesarias por exigencias de orden técnico, jurídico o comercial durante el transcurso de la obra o una vez finalizada la misma, sin que ello implique alteración significativa del objeto y sin mermar las calidades de los materiales. Infografías exteriores e interiores meramente ilustrativas y sujetas a posibles modificaciones; mobiliario no incluido; acabados, calidades, colores, equipamiento, aparatos sanitarios y muebles de cocina aproximados. Toda la información y entrega de documentación se hará según lo establecido en el Real Decreto 515/1989 y demás normas que pudieran complementarlo, ya sean de carácter estatal o autonómico. Infografías exteriores e interiores meramente ilustrativas y sujetas a posibles modificaciones, sin carácter contractual. Han sido elaboradas a partir del Proyecto Básico presentado para tramitación de la licencia de obras, reservándose METROVACESA, S.A. la facultad de introducir aquellas modificaciones necesarias por exigencias de orden técnico, jurídico o comercial para la correcta finalización del edificio o que sean ordenadas por los organismos públicos competentes, sin que ello implique alteración significativa del objeto y sin mermar las calidades de los materiales. El equipamiento de las viviendas será el indicado en la correspondiente memoria de calidades, no se incluye mobiliario de cocina.