

Serenity Gardens. at last!

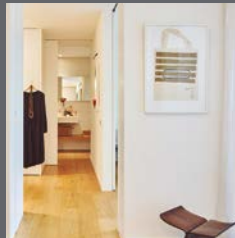
List of materials.



metrovacesa.
at last!



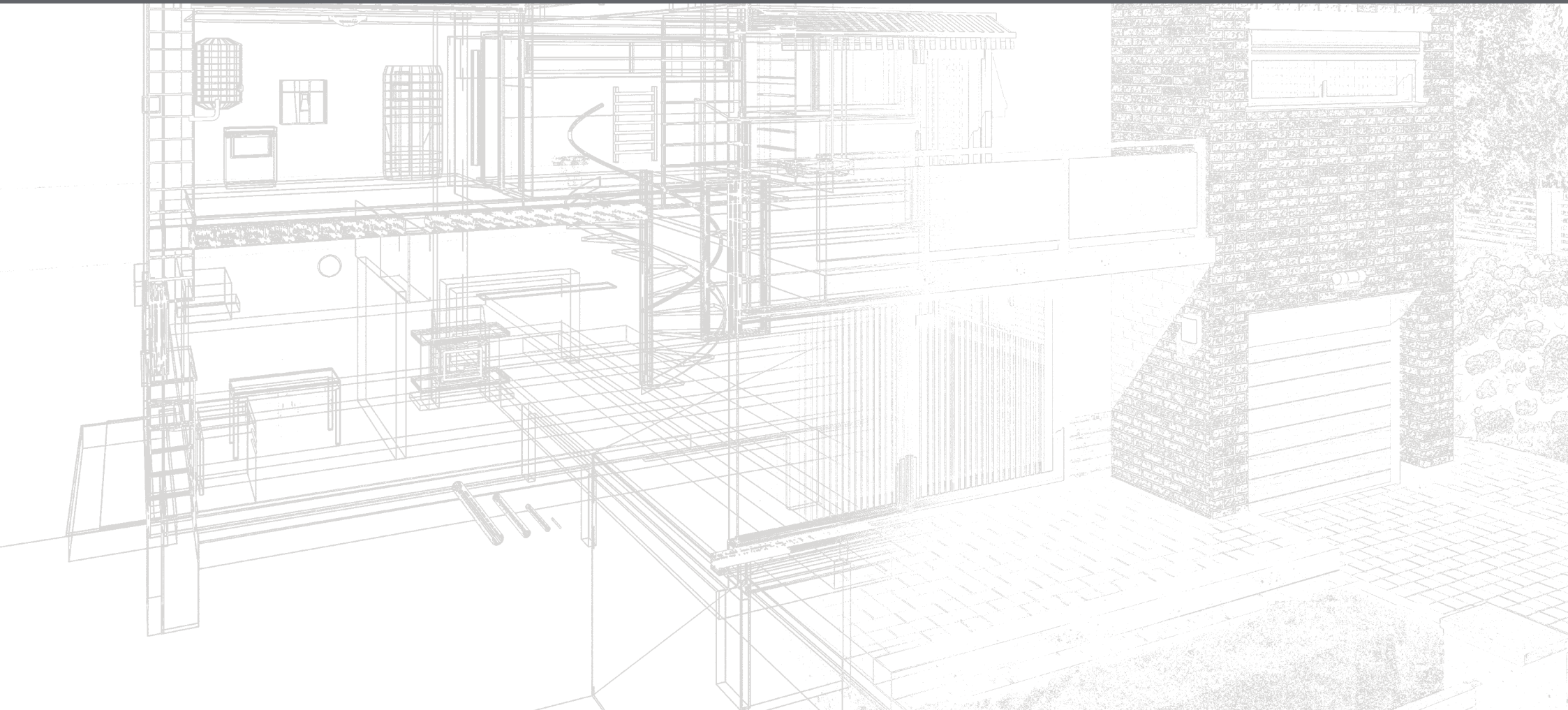
metrovacesa.
at last!



Quality and comfort

The quality of our selected materials, together with our remarkable designs, produce unique homes.

We work with the best architects and interior designers so that you can have a home that really changes your life.





Contents

- | | | | | | | | |
|----------|-----------------------------|-----------|-------------------------|-----------|---------------------------------------|-----------|-----------------------|
| 1 | Foundations and structure | 6 | Walls and insulation | 11 | Suspended ceilings and paintwork | 16 | Parking and storeroom |
| 2 | Facade | 7 | Flooring and tiling | 12 | Electricity, TV and telephone systems | 17 | Energy classification |
| 3 | Roofing | 8 | Bathrooms | 13 | Air-conditioning and hot water supply | | |
| 4 | Exterior metalwork | 9 | Bathroom units and taps | 14 | Ventilation and fan extraction system | | |
| 5 | Interior metal and woodwork | 10 | Kitchen | 15 | Access and community areas | | |

1 Foundations and structure

The foundation and structure will be built in reinforced concrete.

2 Facade

The envelopes of the properties will be made of a continuous coating and plastic paint with thermal insulation, cavity wall and plasterboard cladding with thermal insulation in the interior.

The walls between properties will be made of sound-absorbent brickwork, cladded on both sides and a plasterboard finish with thermal insulation.

3 Roofing

The non-walkable roofs, which accommodate the hot sanitary water and air-conditioning systems, will be provided with thermal insulation and gravel protection.

The terraces will be layered with exterior stoneware flooring.

4 Exterior metalwork

The doors leading to the terrace from the living-room will be framed in lacquered aluminium with double-glazing and thermal break insulation, sliding and hinged doors, respectively, with blinds.

The windows and doors in the bedrooms will be the same depending on their location, with aluminium blinds and thermal insulation in the interior and insulated blind boxes. Hinged windows without blinds will be provided in the bathrooms that have windows.

Aluminium with
double-glazing and
thermal break insulation.

A modern design and
attractive volumes.





5 Interior woodwork

Access to the property is provided through a security door with a security lock, finished in a white lacquered panel in the same fashion as the interior doors.

Interior doors will be plain lacquered.

Modular wardrobes will be provided with hinged doors lacquered in the same fashion as the woodwork. They will have interior lining and include a top shelf and a hanging bar.

6 Walls and insulation

The interior partition walls will be made of thermal and sound-proofed plasterboard.

Adequate thermal and sound comfort.

Modular wardrobes with interior lining.

The images are not real and serve illustration purposes only



The images are not real and serve illustration purposes only

7 Floor and tiling

The floors in the entire property and bathrooms will be laid in porcelain stoneware and an MDF skirting board in the same colour as the woodwork.



The images are not real and serve illustration purposes only

8 Bathrooms

The walls in bathrooms and washrooms will be tiled in porcelain stoneware in the bathtub and shower areas and finished in plastic paint for the remaining walls.



The images are not real and serve illustration purposes only

Main bathroom

INCLUDES:

Wash basin.
WC.
Shower base.
Single lever wash basin taps.
Thermostatic shower taps on a bar.

Secondary bathroom

INCLUDES:

Wash basin.
WC.
Bathtub.
Single lever wash basin taps.
Shower taps.



The images are not real and serve illustration purposes only

Large spaces to make your life more comfortable

9 Bathroom units and taps

In the bathrooms, the units will be made of vitrified porcelain, except for bathtubs and shower bases, which will be made of enamelled steel and resin, respectively. Bathtubs will be provided with single lever taps and the showers will be provided with thermostatic taps.

The main bathroom will be provided with a double wash basin and a two-drawer unit. The secondary bathroom will have wall-suspended wash basin.

The remaining bath units will be provided with single lever taps.

10 Kitchen

Fully-furnished kitchen with Silestone or similar worktops, equipped with appliances.



11 Suspended ceilings and paint

The suspended ceilings will be made of plasterboard in the entire property with manholes in areas where the air-conditioning and ventilation interior units will be placed.

Plain plastic paint will be applied to non-tiled walls and ceilings.

12 Electricity, TV and telephone systems

The electrical system will be installed to provide high electrical power, following the Low Tension Electro-Technical Standards.

Similar electricity switches.

TV and telephone connections in living-room, master bedroom and other rooms as required by the telecommunications regulations.

Lights in the terrace exteriors.

Video intercom with call receiver and colour screen.





13 Heating, air-conditioning and hot water supply

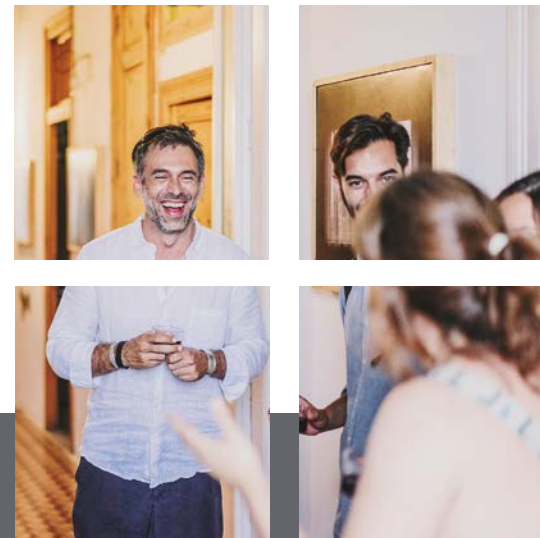
Full air-conditioning system with heat pump (cooling and heating) and ducts running through the suspended ceiling. The interior unit is mounted in the suspended ceiling of the bathrooms and the exterior unit in the technical roof.

Hot water supply is provided by a renewable energy system.

Water distribution interior network is made of polyethylene ducts.

14 Ventilation and fan extraction system

The properties are provided with interior air renovation systems with extractor fans in bathrooms and kitchens.





The images are not real and serve illustration purposes only

A development designed with the quality of life of its residents in mind.

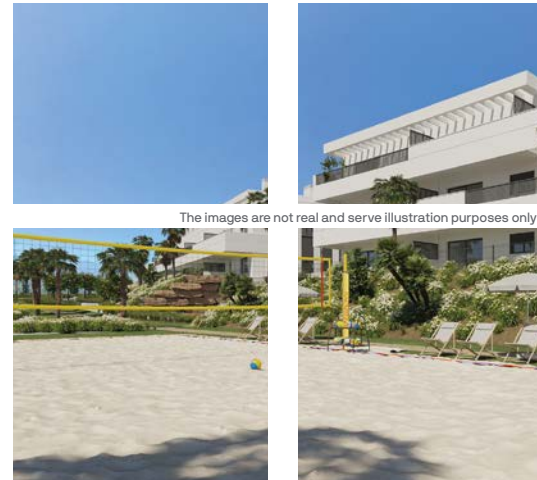
15 Community areas

Community swimming-pool with salt chlorination system.

Garden areas providing access to the natural environment with walkable and resting areas.

Community area with a gym, a spa and a community room.

Putting green, children's area and beach volleyball court.



The images are not real and serve illustration purposes only

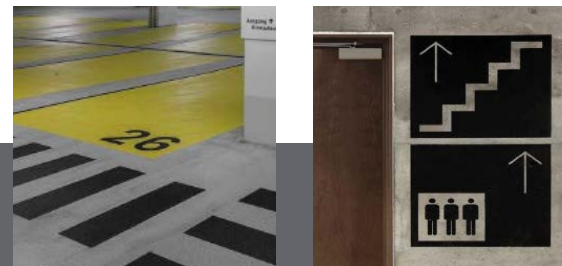
Vehicle access is provided through an automated door

16 Parking and storeroom

Vehicle access is provided through an automated door.

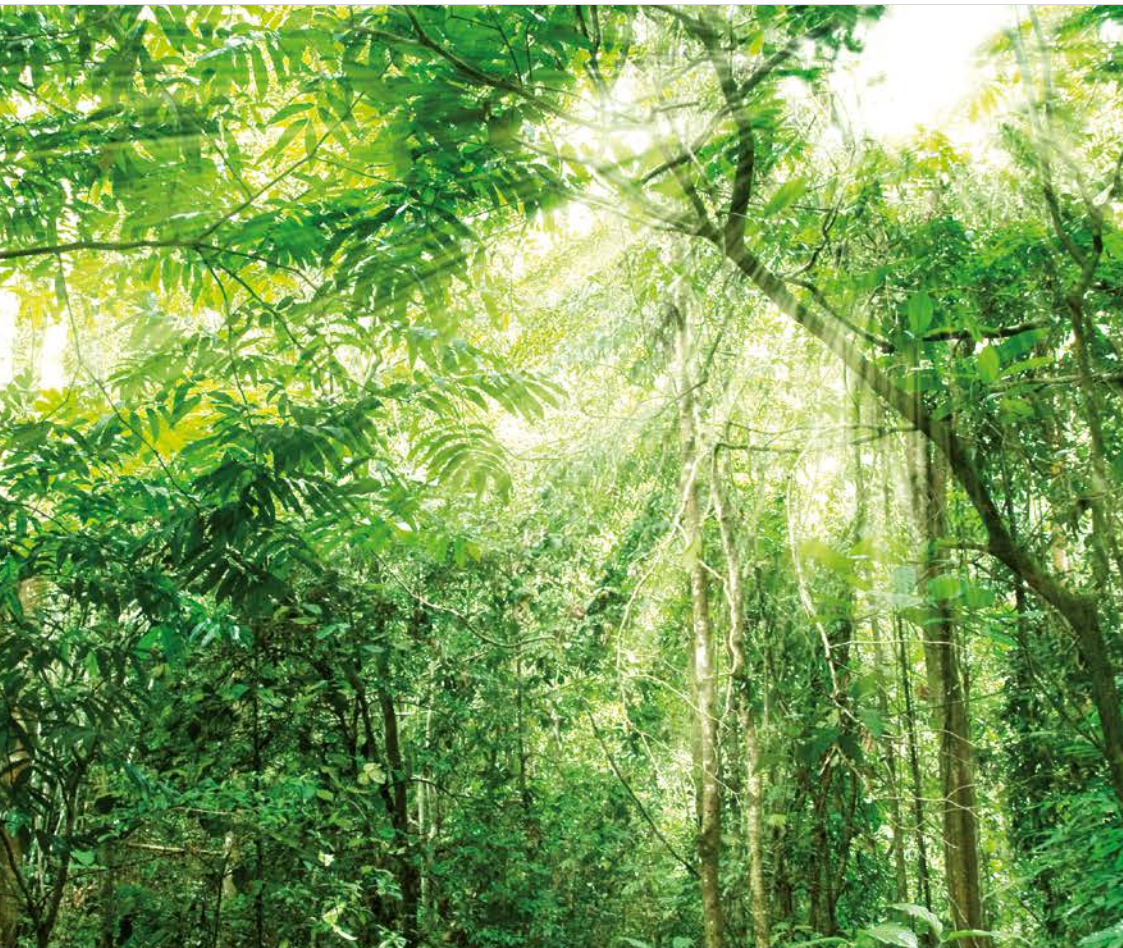
Concrete floor with a surface treatment.

Walls in the parking area will be made of concrete with irrigation water outlets.



Parking floor markings and pictograms

The images are not real and serve illustration purposes only



Our quality standards provide excellent outcomes to guarantee the users' comfort and enjoyment of their home, with not alone the best quality materials in the market, but also the lowest energy consumption.



17 Energy classification



Improvement of construction solutions in order to optimise energy consumption and guarantee user comfort and enjoyment.



LED bulbs are used in various areas of the building, thus guaranteeing optimal consumption, durability and efficiency.

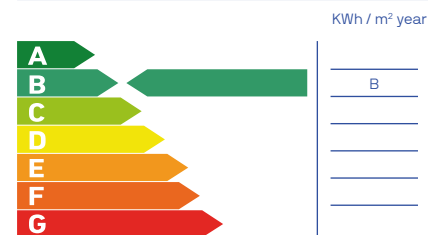


Latest technology in air-conditioning and air-quality systems, with prioritisation of the final outcome product as well as low consumption.

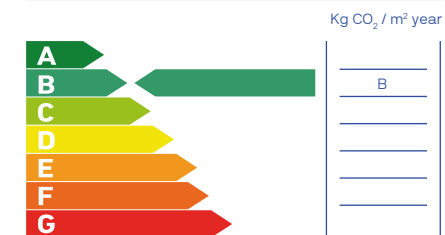


Sanitary units that are environmentally friendly. Their low consumption provides significant savings on the water bill as well as contributing to improve our environment.

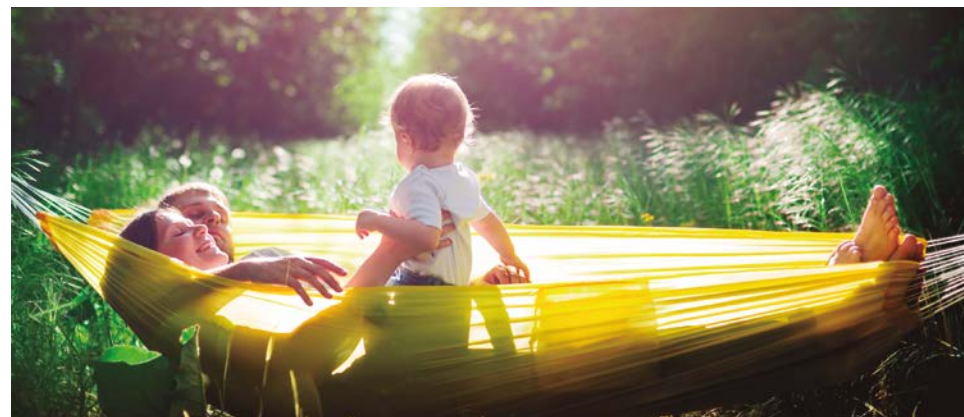
Non-renewable primary energy use



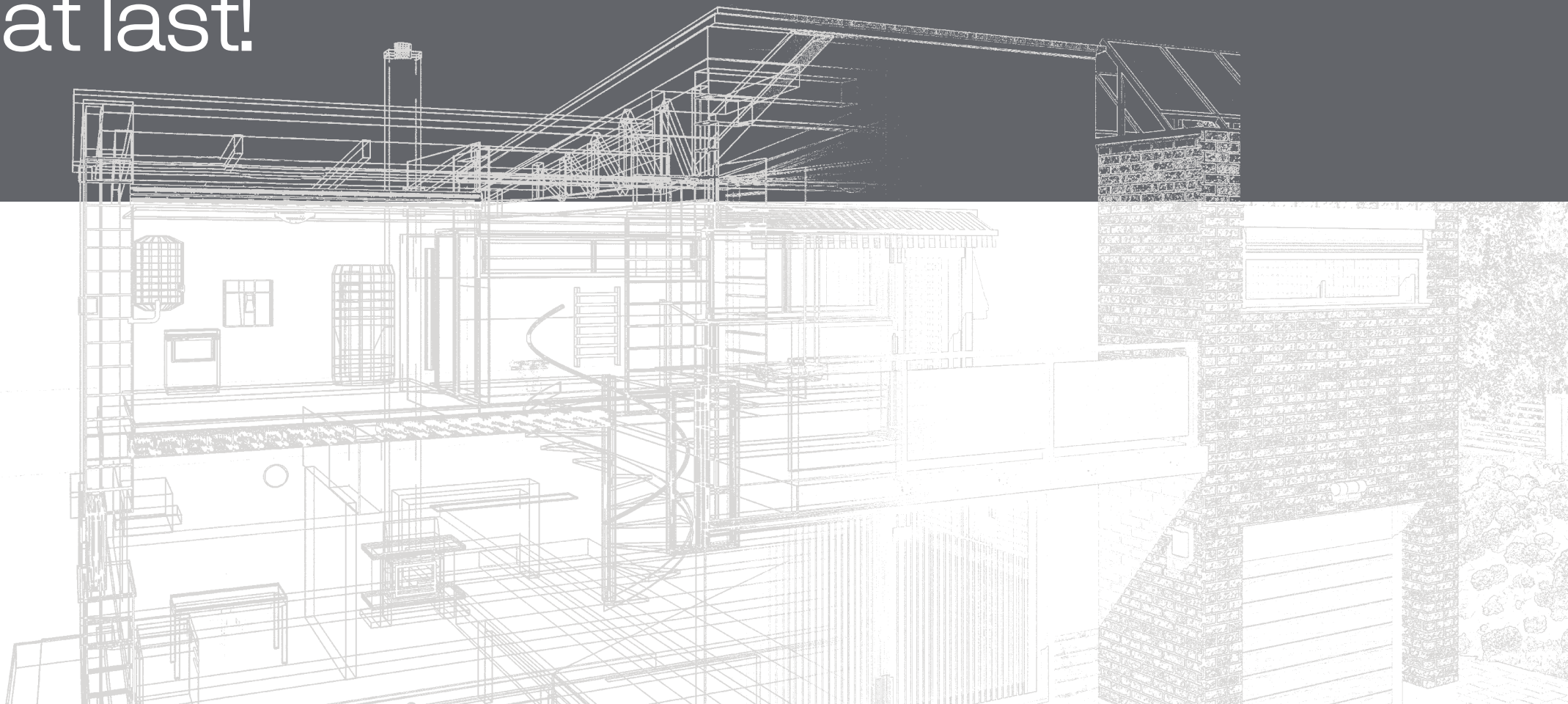
Carbon dioxide emissions



Note: This information, drawings, measurements, dimensions and graphic documentation are for guidance only and they are not contractually binding. They may be subject to potential modifications due to technical, legal or administrative requirements deriving from the granting of the necessary permits and authorisations, as well as any construction or design requirements the Construction Managers might need to consider, without detriment to quality. The furniture, garden features and appliances are shown with illustration purposes only and therefore they will not be included in the property, except in the cases where these are specifically included in the list of materials. The wardrobe dimensions refer to the necessary building gaps. The kitchen furniture and the layout of the appliances may vary slightly subject to their final assembly. The flooring and tiling are also shown for illustration purposes only and modifications may apply. The customisable options must comply with the customisation schedule. Energy certification under progress. Estimations according to initial project calculations.



metrovacesa. at last!



Find your new home at [metrovacesa.com](https://www.metrovacesa.com) | 900 55 25 25 | infopromociones@metrovacesa.com

This list of construction materials serves illustration purposes only, and Metrovacesa, S.A. reserves the right to introduce any modifications necessary on account of technical or legal requirements, as per the indications of the head architect, when these are necessary or convenient for the efficient completion of the building or when they are requested by the competent public bodies, in which case they will be replaced by others of equal or higher quality. The images in this brochure are for illustration purposes only and not contractually binding.